

SUPPORTING INFORMATION

Structural basis for enzyme I inhibition by α -ketoglutarate

Vincenzo Venditti,¹ Rodolfo Ghirlando² and G. Marius Clore*,¹

Laboratories of¹Chemical Physics and²Molecular Biology, National Institute of Diabetes and Digestive and Kidney Diseases, National Institutes of Health, Bethesda, Maryland 20892-0520, USA.

Figure S1. The $c(s)$ distributions for EI obtained at different loading concentrations (ranging from ~ 130 to ~ 2 μM) based on sedimentation velocity interference data collected at 50 krpm and 20.0°C. Data acquired for the free EI (**a**) revealed concentration dependent $c(s)$ interference profiles typical of a monomer-dimer equilibrium. In the presence of 20 mM PEP (**b**) and 20 mM αKG (**c**) the sedimentation experiments indicate that EI is mainly dimeric and only traces of monomeric enzyme are detected.

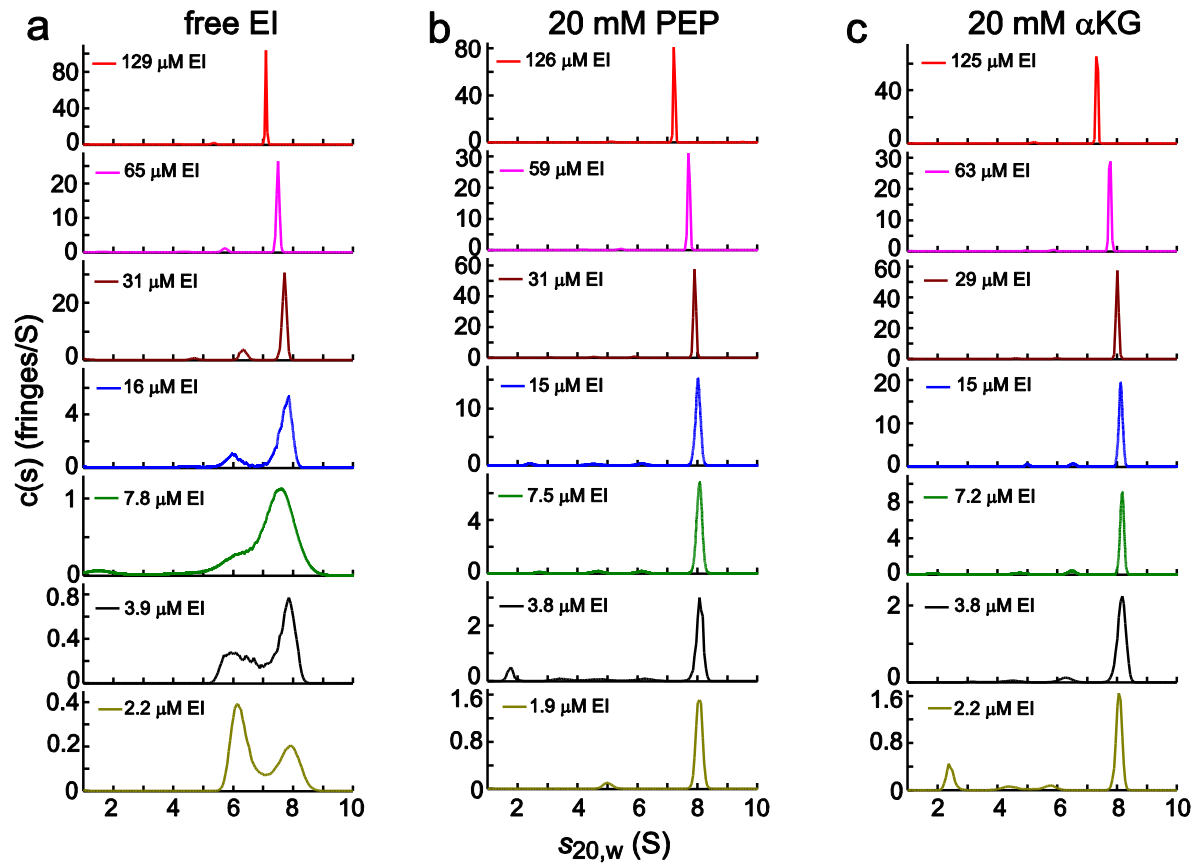


Figure S2. 600 MHz ^1H - ^{15}N TROSY spectra of EIC acquired in the presence of 0, 1, 2 and 4 mM αKG .

